

**SCREEN SCOTLAND  
SGRÌN ALBA**

---

**SCOTLAND'S  
FILM AND TELEVISION  
STUDIO AND  
BUILDSPACE**

**UNDER 10K SQ FT**

Updated: April 2024

# Welcome to Scotland

The Scottish production sector has grown significantly over the last few years, as has the infrastructure required to support this exciting growth. This document illustrates the diverse range of studio and build space facilities available to feature film and HETV productions, located in and around key production hubs in Scotland. Projects as varied as *Good Omens*, *The Rig* and *Anansi Boys* (Amazon), *Outlander* (Starz/Sony), *T2 Trainspotting* (Sony), *The Buccaneers* (Apple+) have all found homes in Scotland. We look forward to helping find a home for your production too – full details on the following pages.

—

For information on our funding programmes and other services provided by Screen Scotland, please visit our website [screen.scot](https://www.screen.scot) or contact us at [locations@creativescotland.com](mailto:locations@creativescotland.com)

# Contents

<b>Assumption StudiosGlasgow</b>	<b>4</b>
<b>Edinburgh Film Studios</b>	<b>6</b>
<b>Film City Glasgow</b>	<b>8</b>
<b>Freakworks Studio FacilitiesEdinburgh</b>	<b>10</b>
<b>Glue Factory Glasgow</b>	<b>12</b>
<b>Hopscotch Theatre CompanyGlasgow</b>	<b>14</b>
<b>M2 Films Ltd Edinburgh</b>	<b>16</b>
<b>Saviours StudioGlasgow</b>	<b>18</b>
<b>Scottish Opera Glasgow</b>	<b>20</b>
<b>Silver Cloud StudiosHillington, Glasgow</b>	<b>22</b>
<b>Studio Alba Stornoway</b>	<b>24</b>
<b>SWG3Glasgow</b>	<b>26</b>
<b>TCU Studio &amp; Office Facilities Glasgow</b>	<b>28</b>

This document is accurate at the time of publication. However, the providers are constantly developing their services and spaces so **please ensure you contact the operators directly to check your specific requirements.**

# Assumption Studios Glasgow



Contact	<b>Name of site</b>	Assumption Studios	
	<b>Owner/company</b>	Logan Factoring Ltd	
	<b>Contact name</b>	Joe Logan	
	<b>Full address</b>	493 Bilsland Drive, Glasgow G20 9JN	
	<b>Telephone</b>	+44 (0)141 429 5918	
	<b>Email</b>	<a href="mailto:enquiries@assumptionstudios.com">enquiries@assumptionstudios.com</a>	
	<b>Website</b>	<a href="http://www.assumptionstudios.co.uk">www.assumptionstudios.co.uk</a>	
	<b>Previous production use</b>	Former church, commercials, drama, music videos, Orchestral recording for film and Photography	
Features	<b>Dimensions of space</b>	<b>Studio A</b>	26 ft (7.9 m) length x 29 ft (8.9 m) width x 16 ft (4.9 m) clear height to lighting gantry zone
		<b>Studio B</b>	77 ft (23.5 m) length x 44 ft (13.5 m) width x 18.7 ft (5.7 m) clear height to lighting gantry zone
	<b>Soundproofing</b>	Upgrade to full sound stage in progress	
	<b>Blackout</b>	Can be arranged on request	
	<b>Access details</b>	11.5 ft (3.5 m) x 12.8 ft (3.9 m)	
	<b>Parking</b>	Ample with additional space for service vehicles	
	<b>Additional features</b>	Control room, production office, edit suite, 2 fully fitted kitchens, shower room. Extensive adjacent land with secure backlot	
Travel	<b>Closest major road</b>	Maryhill Road, Great Western Road, M8	
	<b>Closest major city</b>	Glasgow	
	<b>Closest airport</b>	Glasgow International	
	<b>Closest accommodation</b>	<a href="#">Great Western Road Glasgow (5 mins drive)</a>	



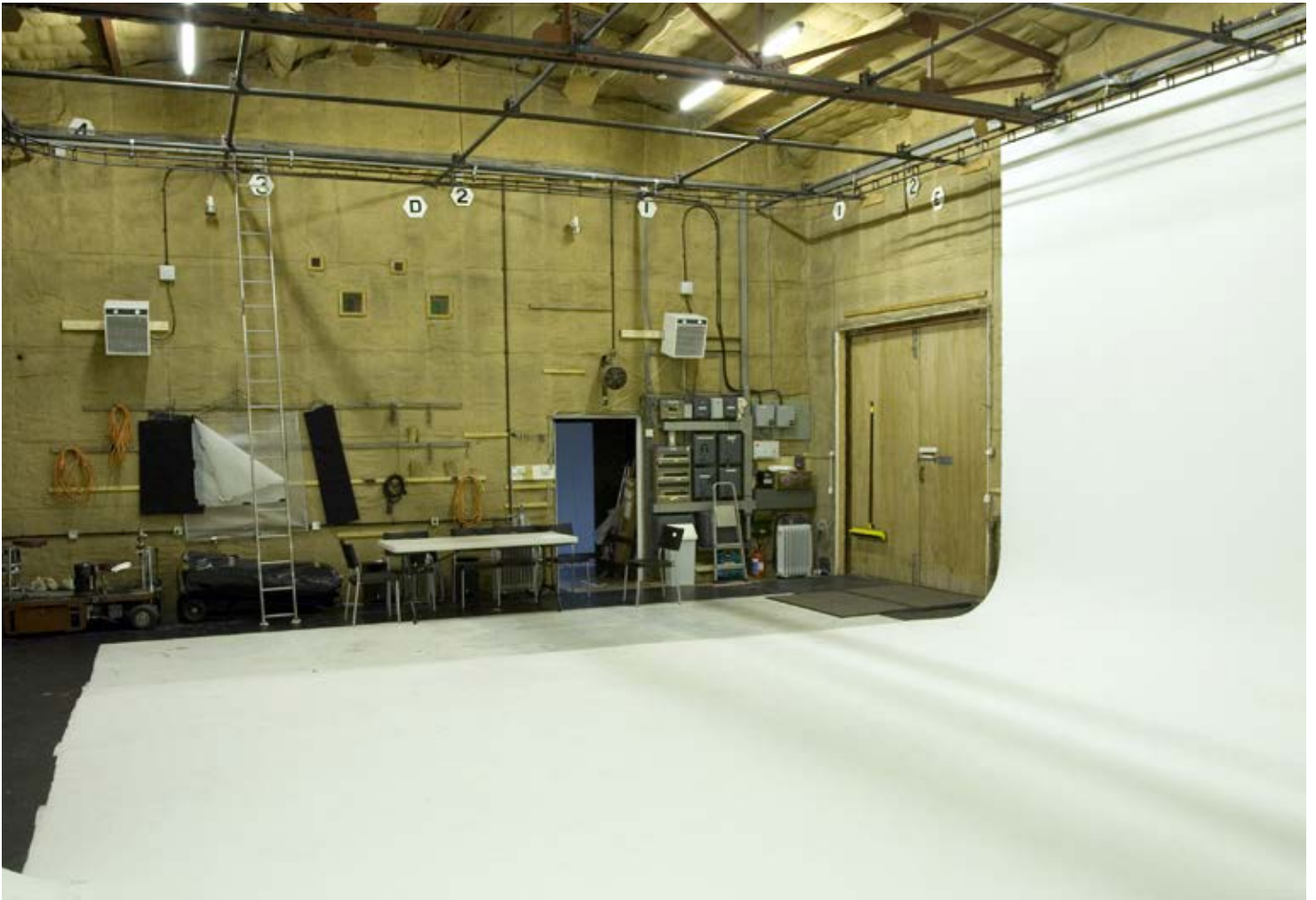


# Edinburgh Film Studios



Contact	<b>Name of site</b>	Edinburgh Film Studios
	<b>Owner/company</b>	Donald Mitchell
	<b>Contact name</b>	Mitch
	<b>Full address</b>	Nine Mile Burn, Midlothian EH26 9LT
	<b>Telephone</b>	+44 (0)7956 307 381
	<b>Email</b>	<a href="mailto:info@edinburghfilmstudios.co.uk">info@edinburghfilmstudios.co.uk</a>
	<b>Website</b>	<a href="http://www.edinburghfilmstudios.co.uk">www.edinburghfilmstudios.co.uk</a>
	<b>Previous production use</b>	Commercials, corporate, music videos, media training, small-scale drama, children's TV and stills photography
Features	<b>Dimensions of space</b>	42.6 ft (13 m) x 33 ft (10 m) x 13ft (4 m)
	<b>Soundproofing</b>	Yes
	<b>Blackout</b>	Yes, wrap around drapes.
	<b>Access details</b>	24-hour drive-in access
	<b>Parking</b>	Yes - 20-25 vehicles
	<b>Additional features</b>	Lighting hire, grip hire, personnel on site, breakout space - 1,991 sq ft (185 sq m), office, green room, kitchen, makeup and changing room, 2 x infinity coves, pre-lit green screen, 600A 3-phase power, distro, dimming, 40KW heating, high speed fibre broadband'
Travel	<b>Closest major road</b>	A702
	<b>Closest major city</b>	Edinburgh (15 mins)
	<b>Closest airport</b>	Edinburgh (20 mins)
	<b>Closest accommodation</b>	<a href="#">Local 1 Mile/Penicuik/Edinburgh</a>





# Film City Glasgow



Contact	<b>Name of site</b>	Film City Glasgow
	<b>Owner/company</b>	Film City Glasgow Ltd
	<b>Contact name</b>	Philip Doyle
	<b>Full address</b>	401 Govan Road, Glasgow G51 2QJ
	<b>Telephone</b>	+44 (0)141 445 7243
	<b>Email</b>	<a href="mailto:facilities@filmcityglasgow.com">facilities@filmcityglasgow.com</a>
	<b>Website</b>	<a href="http://www.filmcityglasgow.com">www.filmcityglasgow.com</a>
Features	<b>Previous production use</b>	<b>Features:</b> <i>Malevolent, Under the Skin, Beats, Sunshine on Leith, Legacy, Outpost, Citadel, Hallam Foe.</i> <b>TV:</b> <i>Molly &amp; Mack, Princess Mirror Belle, Hattie, Last Commanders, Iron Chef UK, School of Silence, T4 Transmission, Hogmanay Live.</i> <b>Rehearsals:</b> Various theatre and tv productions including <i>National Theatre of Scotland, Mrs Brown's Boys</i>
	<b>Dimensions of space</b>	Main floor 4,252sq ft (395sq m) - approx length 73ft (22.25m) x 58ft (17.67m). Additional stage area 1,722sq ft (160sq m). Height to radiant heaters 28ft (8.6m)
	<b>Soundproofing</b>	Partial
	<b>Blackout</b>	Yes
	<b>Access details</b>	Load in and on road external generator cabling via Summertown Road. Disabled access. Internal lift
Travel	<b>Parking</b>	Plentiful free on street parking
	<b>Additional features</b>	Production offices with photocopying, accounts, furniture, and kitchen facilities. Flexible breakout rooms: boardroom, makeup, wardrobe, greenroom, storage, props. In-house managed phone and 10GB leased line internet. Wi-Fi access across site. In-house café. Secure access with personnel on-site. Over 20 permanent tenant companies including picture and sound post-production companies, factual, scripted and animation production companies, VFX and casting companies.
	<b>Closest major road</b>	Govan Road/Paisley Road West leading to M8 motorway
Travel	<b>Closest major city</b>	Glasgow
	<b>Closest airport</b>	Glasgow Airport
	<b>Closest accommodation</b>	<a href="#">Glasgow</a>







# Freakworks Studio Facilities **Edinburgh**



Contact	<b>Name of site</b>	Freakworks Studio Facilites
	<b>Owner/company</b>	Freakworks
	<b>Contact name</b>	Claire Deas
	<b>Full address</b>	18/19 Broad Wynd, The Shore, Leith, Edinburgh EH6 6QZ
	<b>Telephone</b>	+44 (0)131 555 7678
	<b>Email</b>	
	<b>Website</b>	<a href="http://www.freak-works.com">www.freak-works.com</a>
Features	<b>Previous production use</b>	Warehouse
	<b>Dimensions of space</b>	Studio - 48 ft (14.7 m) x 22 ft (6.76 m) height 12.6 ft (3.85 m), 9.3 ft (2.85 m) w/space lights
	<b>Soundproofing</b>	No
	<b>Blackout</b>	Full blackout/no windows
	<b>Access details</b>	Subject to availability
	<b>Parking</b>	Parking on street
	<b>Additional features</b>	Infinity cove 33 ft (10 m) x 18.8 ft (5.73 m). Makeup and dressing room. Greenroom breakout space. 1GB leased line and failover. Freakworks post facilities on-site including data lab, offline, online, VFX, grading and recording studios. Dry hire suites also available.
Travel	<b>Closest major road</b>	Easy access to Edinburgh City Bypass (15 mins)
	<b>Closest major city</b>	Edinburgh
	<b>Closest airport</b>	Edinburgh International Airport (30 mins) w Airport
	<b>Closest accommodation</b>	<a href="#">Malmaison Leith</a> , <a href="#">Ocean Mist Floating Hotel</a>





# Glue Factory Glasgow

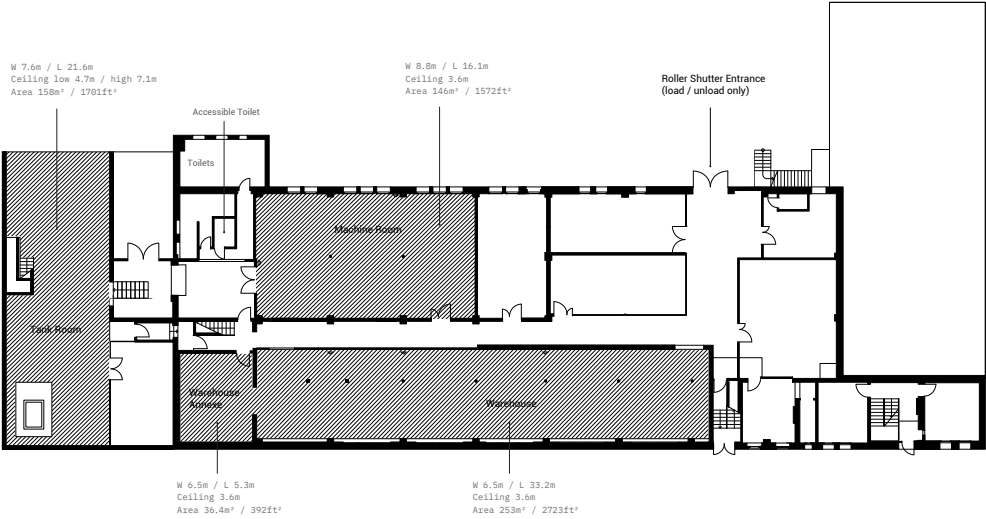


Contact	<b>Name of site</b>	Glue Factory
	<b>Owner/company</b>	Agile City CIC
	<b>Contact name</b>	Katie O'Grady - Glue Factory hire coordinator
	<b>Full address</b>	22 Farnell Street, Glasgow, G4 9SE
	<b>Telephone</b>	+44 (0)7360 636574
	<b>Email</b>	hires@agile-city.com
	<b>Website</b>	www.agile-city.com
	<b>Previous production use</b>	Making and production facility providing light-industrial studios, workshop, and venue spaces for design, fabrication and film. Playstation, Royal Conservatoire Scotland, Cryptic, BBC Studios.
Features	<b>Dimensions of space</b>	<p><b>Warehouse:</b>Total 2,723 sq ft (253 sq m) 21.6 ft (6.6 m) x 127 ft (38.6 m). Height 12 ft (3.6 m)</p> <p><b>Machine Room:</b>Total 1,572 sq ft (146 sq m) 53 ft (16.1 m) x 30 ft (9.2 m). Height 12 ft (3.6 m)</p> <p><b>Galleries:</b> Total 3,520 sq ft (327 sq m) 28 ft (8.5 m) x 52 ft (16 m). Height range 11.8 ft - 20 ft (3.6 m - 6 m)</p> <p><b>Tank Room:</b> Total 1,701 sq ft (158 sq m) 18 ft (5.6 m) x 71 ft (21.6 m). Height range 16 ft - 23 ft (4.8 m - 7.1 m)</p>
	<b>Soundproofing</b>	No
	<b>Blackout</b>	Blackout: Yes - Warehouse and Machine Room Windows: Yes - (skylights) Galleries and Tank Room
	<b>Access details</b>	Ramp for pedestrian access Roller shutter for load in/load out By appointment only
	<b>Parking</b>	2 parking bays. On street parking - Burns Street and Farnell Street.
	<b>Additional features</b>	Kitchen and toilet spaces
	<b>Closest major road</b>	Garscube Road (A81) with easy access to motorway (M8 - J17)
Travel	<b>Closest major city</b>	Glasgow
	<b>Closest airport</b>	Glasgow International Airport, Paisley PA3 2ST
	<b>Closest accommodation</b>	Glasgow City Centre. 10 min walk to Cowcaddens subway station (1-2 stops to central). 5 min walk to Garscube bus stop (multiple buses going to central). 20 min walk to Central





Agile City	Glue Factory		Floor Plan
------------	--------------	--	------------



Ground Floor	Hire Area	Double Socket	Scale 1:300 at A4	0  2m	North
--------------	-----------	---------------	-------------------	-------	-------



# Hopscotch Theatre Company Glasgow



Contact	<b>Name of site</b>	Hopscotch Theatre Company
	<b>Owner/company</b>	Hopscotch Theatre Company
	<b>Contact name</b>	Stephanie Black-Daniels
	<b>Full address</b>	Level 2, 7 Water Row, Govan, G51 3UW
	<b>Telephone</b>	+44 (0)141 440 2025
	<b>Email</b>	<a href="mailto:info@hopscotchtheatre.com">info@hopscotchtheatre.com</a>
	<b>Website</b>	<a href="http://hopscotchtheatre.com/spacehire">hopscotchtheatre.com/spacehire</a>
Features	<b>Previous production use</b>	
	<b>Dimensions of space</b>	23 ft (7 m) x 24.6 ft (7.5 m). Height approx. 23 ft (7 m)
	<b>Soundproofing</b>	Loud noise can be made as the space is a working rehearsal studio
	<b>Blackout</b>	Windows. Blackout not supplied.
	<b>Access details</b>	Second floor (no lift)
	<b>Parking</b>	Free on street parking. Large car park opposite.
	<b>Additional features</b>	Kitchen and toilet spaces
Travel	<b>Closest major road</b>	Govan Road
	<b>Closest major city</b>	Glasgow
	<b>Closest airport</b>	Glasgow Airport
	<b>Closest accommodation</b>	<a href="#">Glasgow</a>





# M2 Films Ltd

## Edinburgh



Contact	<b>Name of site</b>	Richard Mountney Photography
	<b>Owner/company</b>	M2 Films Ltd
	<b>Contact name</b>	Richard Mountney
	<b>Full address</b>	19A Broad Wynd, Edinburgh, EH6 6QZ
	<b>Telephone</b>	+44 (0)131 5550630
	<b>Email</b>	info@m2films.co.uk
	<b>Website</b>	www.m2films.co.uk/studio-rental
Features	<b>Previous production use</b>	Ex-engineering
	<b>Dimensions of space</b>	23 ft (7 m) x 52 ft (16 m). Height 12 ft (3.7 m)
	<b>Soundproofing</b>	No
	<b>Blackout</b>	Yes
	<b>Access details</b>	1st floor stairwell
Travel	<b>Parking</b>	On street
	<b>Additional features</b>	Fully fitted kitchen, equipment rental options, high ceiling, concrete floors, model changing/makeup room, workshop/ dirty room available by appointment. 2 large desks and communal seating area.
	<b>Closest major road</b>	Commercial Street/Bernard Street
	<b>Closest major city</b>	Edinburgh
	<b>Closest airport</b>	Edinburgh Airport
	<b>Closest accommodation</b>	Malmaison (150 m away). Holiday Inn (1 km).



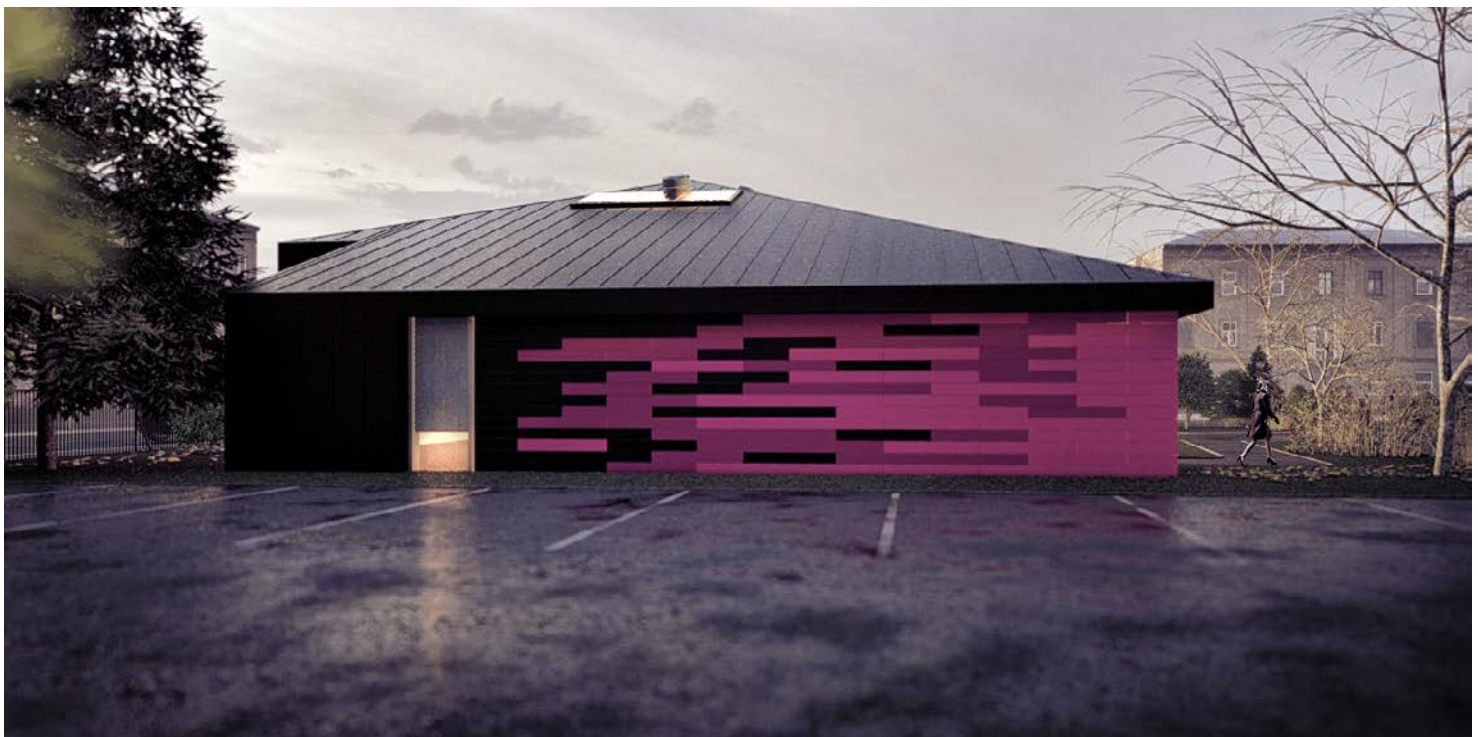




# Saviours Studio Glasgow



Contact	<b>Name of site</b>	Saviours Studio
	<b>Owner/company</b>	Urban Office Ltd
	<b>Contact name</b>	Lesley Logan
	<b>Full address</b>	37 Merryland Street, Glasgow, G51 2QG
	<b>Telephone</b>	+44 (0)141 429 5918
	<b>Email</b>	enquiries@savioursstudios.com
	<b>Website</b>	www.savioursstudios.com
	<b>Previous production use</b>	Former church hall
Features	<b>Dimensions of space</b>	Total 1,819 sq ft (169 sq m). Buildspace 42.6 ft (13 m) x 42.6 ft (13 m), flexible production office 280 sq ft (26 sq m), flexible workshop space 248 sq ft (23 sq m). Height 18.7 ft (5.7 m).
	<b>Soundproofing</b>	No
	<b>Blackout</b>	Can be arranged on request
	<b>Access details</b>	24 hr access available
	<b>Parking</b>	Yes - 30 spaces onsite. Additional 1,2917 sq ft (1,200 sq m) area which can be used as overspill.
	<b>Additional features</b>	Office space with 300MB broadband available. Additional 1,200 sqm of flexible area can be used as external green space. Container storage on site. Close to Film City (150 m) and BBC Scotland/STV offices (4 mins travel time) in the heart of the city's Media Quarter.
Travel	<b>Closest major road</b>	M8/M77 - Paisley Road West, Govan Road, Pacific Quay
	<b>Closest major city</b>	Glasgow City Centre Edinburgh (1 hr 15 mins travel time)
	<b>Closest airport</b>	Glasgow (12 mins travel time)
	<b>Closest accommodation</b>	Glasgow Pacific Quay and Glasgow City Centre

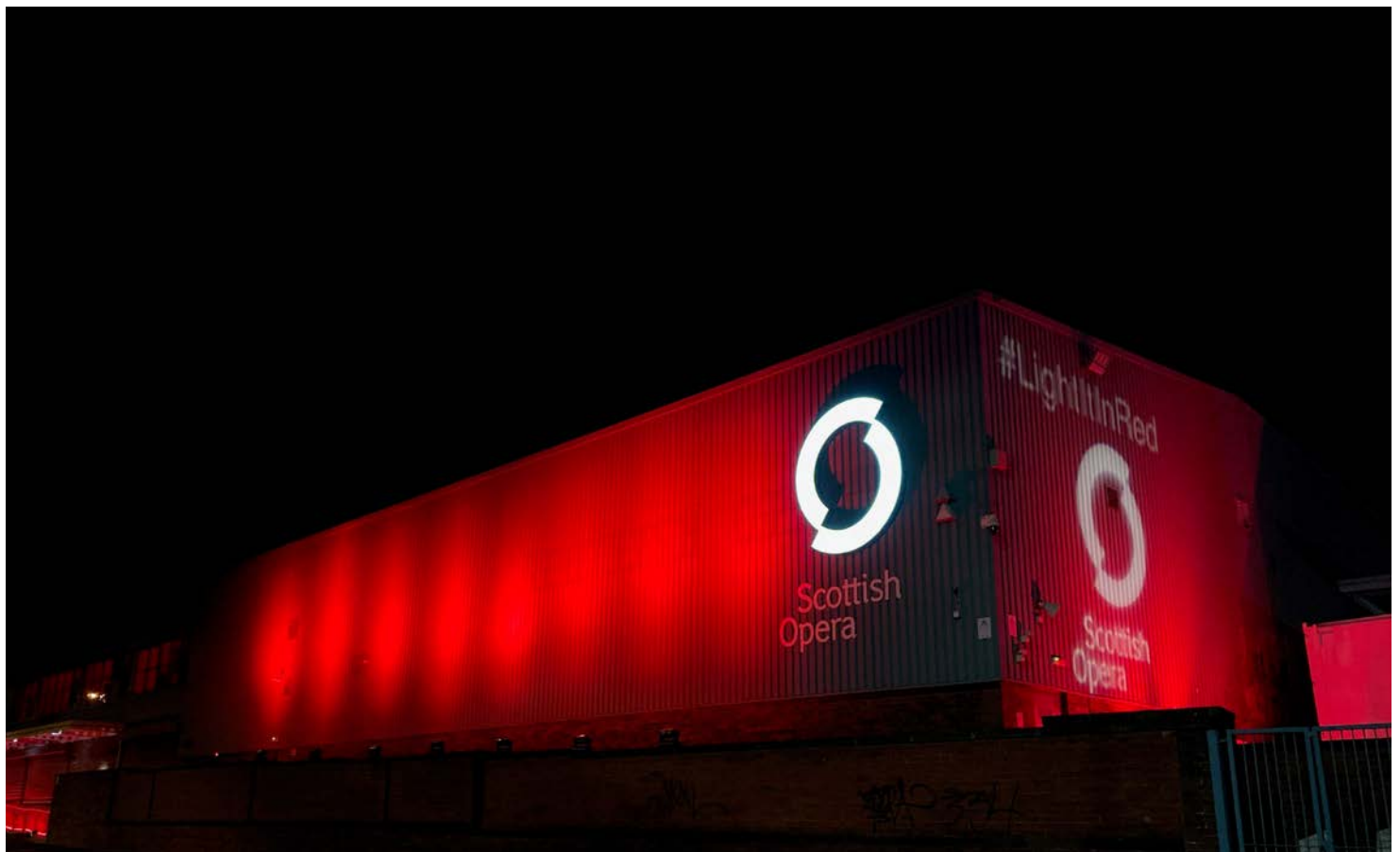




# Scottish Opera Glasgow



Contact	<b>Name of site</b>	Scottish Opera – Glasgow
	<b>Owner/company</b>	Scottish Opera
	<b>Contact name</b>	Jackie Whyte
	<b>Full address</b>	40 Edington Street, Glasgow G4 9RD and 39 Elmbank Crescent, Glasgow G2 4PT
	<b>Telephone</b>	+44 (0)141 332 9559 (Production Studios) +44 (0)141 248 4567 (Administration)
	<b>Email</b>	<a href="mailto:jackie.whyte@scottishopera.org.uk">jackie.whyte@scottishopera.org.uk</a>
	<b>Website</b>	<a href="http://www.scottishopera.org.uk">www.scottishopera.org.uk</a>
Features	<b>Previous production use</b>	Various
	<b>Dimensions of space</b>	Rehearsal room – 63 ft (19.1 m) x 59 ft (18 m) Various spaces available – please contact for further information.
	<b>Soundproofing</b>	No
	<b>Blackout</b>	Not available in all spaces
	<b>Access details</b>	By arrangement
	<b>Parking</b>	Limited, not guaranteed
	<b>Additional features</b>	Lighting, water and personnel on site
Travel	<b>Closest major road</b>	M8
	<b>Closest major city</b>	Glasgow
	<b>Closest airport</b>	Glasgow Airport
	<b>Closest accommodation</b>	<a href="#">Glasgow</a>



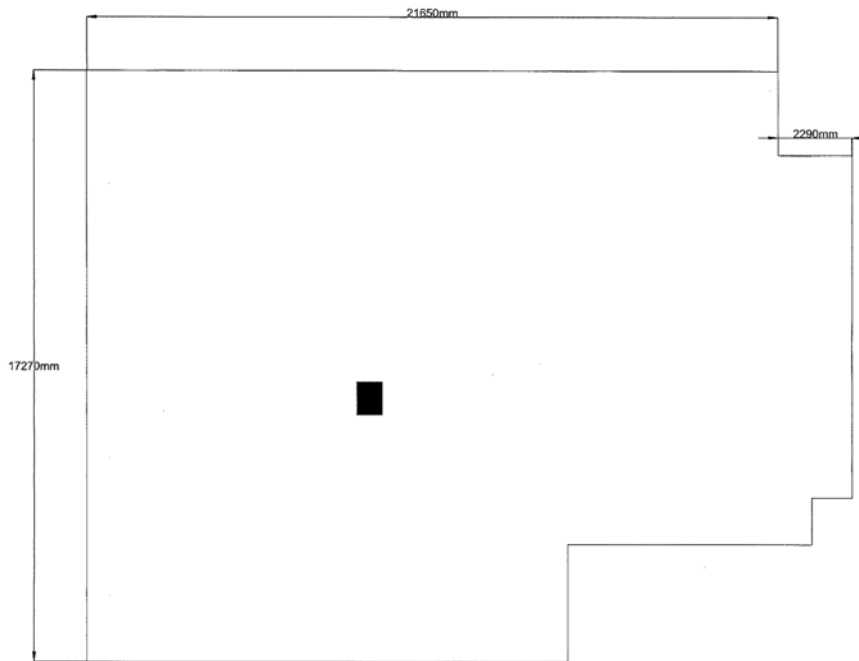


# Silver Cloud Studios Hillington, Glasgow



Contact	<b>Name of site</b>	Silver Cloud Studios
	<b>Owner/company</b>	Scottish Opera
	<b>Contact name</b>	Jackie Whyte
	<b>Full address</b>	Northpoint, Unit 20, 39 Gordon Avenue, Hillington G52 HTG
	<b>Telephone</b>	Jackie Whyte: +44 (0)141 248 4567
	<b>Email</b>	<a href="mailto:jackie.whyte@scottishopera.org.uk">jackie.whyte@scottishopera.org.uk</a>
	<b>Website</b>	<a href="http://www.scottishopera.org.uk">www.scottishopera.org.uk</a>
Features	<b>Dimensions of space</b>	4090 sq ft (380 sq m), 7103 ft (2165 m) x 57 ft (17.3 m). Height 21.2 ft (6.46 m)
	<b>Soundproofing</b>	Party wall 100 mm Isover acoustic roll
	<b>Blackout</b>	Opaque ceiling tile (in grid formation)
	<b>Access details</b>	Power door to rehearsal area (on flat)
	<b>Parking</b>	At the front and side of property
	<b>Additional features</b>	Separate male & female toilet blocks, disabled toilet, fully fitted kitchen.
Travel	<b>Closest major road</b>	M8
	<b>Closest major city</b>	Glasgow (12-15 mins travel time)
	<b>Closest airport</b>	Glasgow
	<b>Closest accommodation</b>	<a href="#">Glasgow airport</a> , <a href="#">Renfrew</a> , <a href="#">Paisley</a>



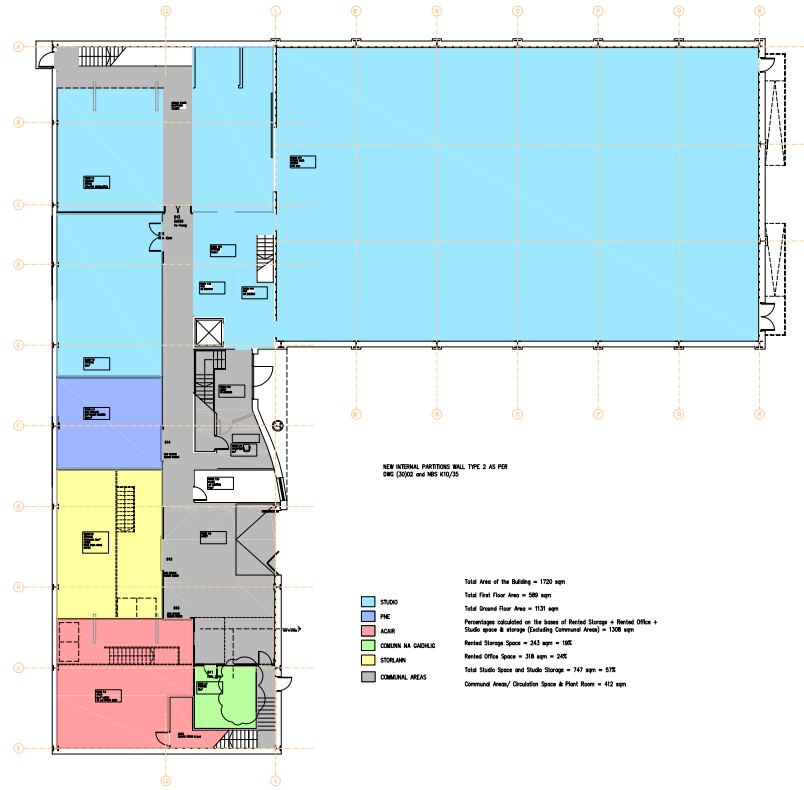


# Studio Alba **Stornoway**

Contact	<b>Name of site</b>	Studio Alba - Stornoway
	<b>Owner/company</b>	Comhairle nan Eilean Siar
	<b>Contact name</b>	Kathlene Morrison
	<b>Full address</b>	54A Seaforth Road, Stornoway HS1 2SD
	<b>Telephone</b>	+44 (0)1851 600501
	<b>Email</b>	kathlene.morrison@cne-siar.gov.uk
	<b>Website</b>	www.cne-siar.gov.uk
	<b>Previous production use</b>	Features: <i>Road Dance</i> . TV: <i>Katie Morag</i> , <i>An Clò Mòr</i> , <i>Transatlantic Sessions</i> , <i>Rapal</i>
Features	<b>Dimensions of space</b>	Total studio and associated storage 8,040 sq ft (747 sq m) - 98 ft (30 m) wide. Height 59 ft (18 m).
	<b>Soundproofing</b>	
	<b>Blackout</b>	Yes
	<b>Access details</b>	Single and double doors (drive in)
	<b>Parking</b>	Yes - 40 spaces on site
	<b>Additional features</b>	Uniquely located and highly adaptable studio space in close proximity to a wide range of extremely scenic and attractive locations. Sited within a thriving hub of creative industry in the centre of Stornoway, Outer Hebrides. Motorised lighting and scenery hoists, full DMX grid, scene dock, props store. High standard production and ancillary space available to lease in neighbouring offices and adjacent Media Centre (MG Alba HQ with full technical facilities plus numerous independent and post production companies). Water and electricity. Highly supportive and diverse local skillsbase within dynamic indigenous Gaelic television industry.
		<b>Closest major road</b>
Travel	<b>Closest major city</b>	Inverness
	<b>Closest airport</b>	Stornoway airport with direct links to Glasgow (1 hour), Edinburgh (1 hour), Inverness (40 mins), Benbecula (30 mins) and ferry port linking to Ullapool (sea time 2.5 hours)
	<b>Closest accommodation</b>	<b>Stornoway</b> (pop. 13,000) hospital, arts centre inc. cinema, plentiful accommodation and retail facilities. Ease of access to rural village locations including additional accommodation options and highly resourced modern network of village halls suitable for supporting location work.





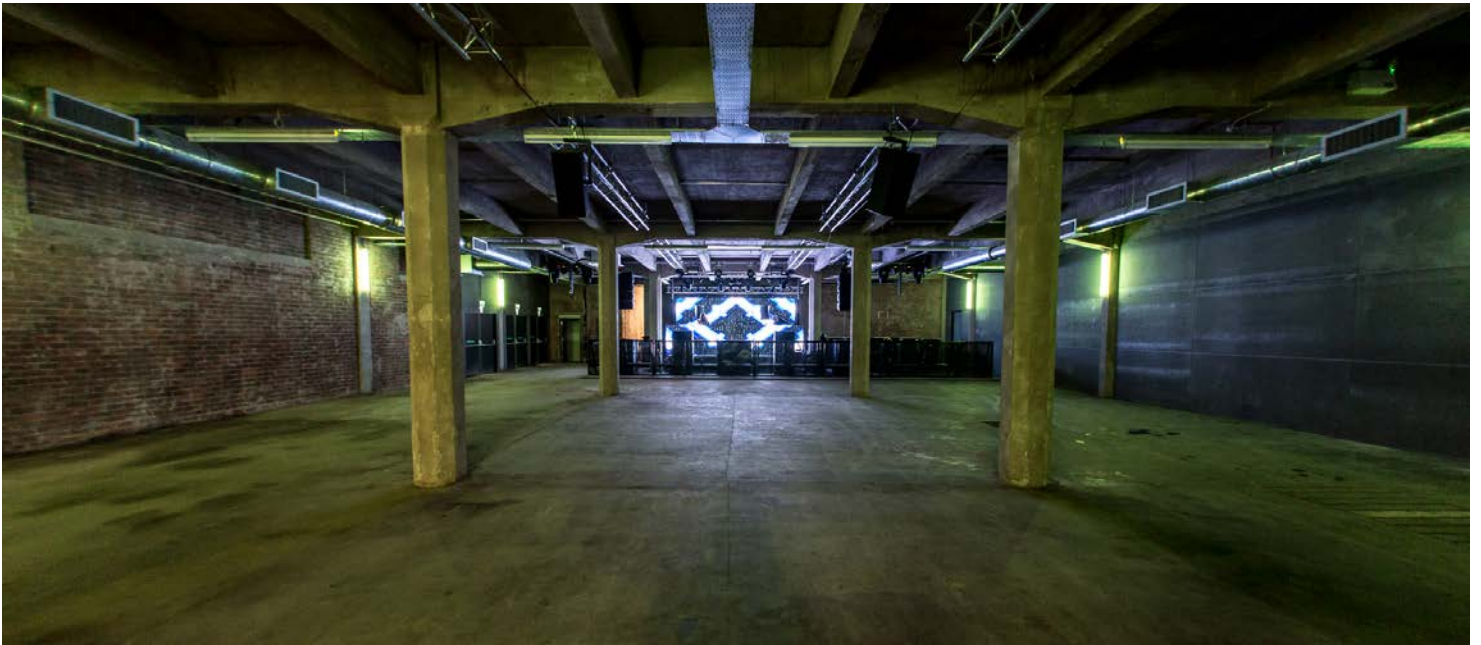
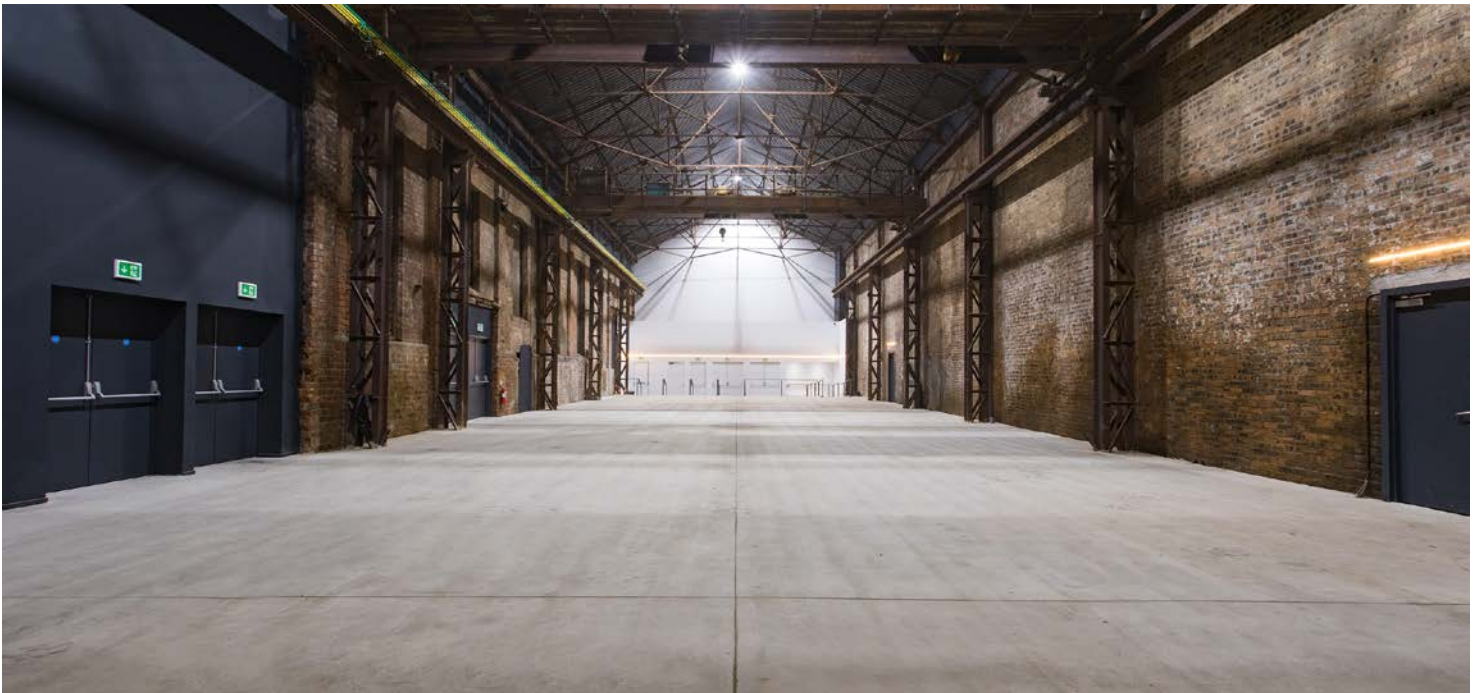
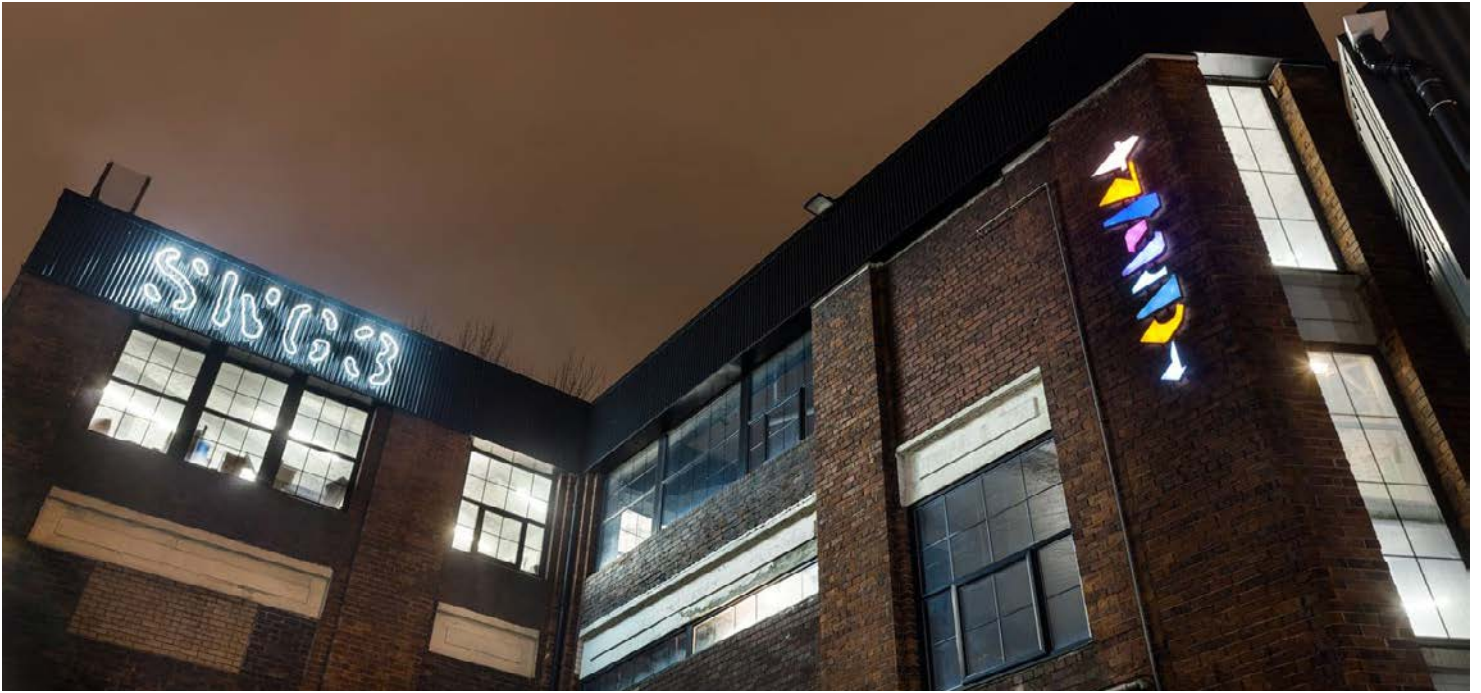


# SWG3 Glasgow



Contact	<b>Name of site</b>	SWG3
	<b>Owner/company</b>	Andrew Fleming-Brown
	<b>Contact name</b>	Meryl Gilbert
	<b>Full address</b>	SWG3, 100 Eastvale Place, Glasgow G3 8QG
	<b>Telephone</b>	+44 (0)141 337 1731
	<b>Email</b>	info@swg3.tv
	<b>Website</b>	www.swg3.tv
Features	<b>Previous production use</b>	Warehouse, locations, events
	<b>Dimensions of space</b>	TV Studio total 5,127 sq ft (476 sq m), comprised of TV Studio Venue 3,659 sq ft (340 sq m) and TV Studio Bar 1,467 sq ft (136 sq m) Warehouse 3,293 sq ft (306 sq m) Photo Studio 1,291 sq ft (120 sq m) Poetry Club 542 sq ft (50 sq m) Galvanisers Yard (Outdoor) 31,484 sq ft (2,925 sq m) Galvanisers Venue 6,296 sq ft (585 sq m)
	<b>Soundproofing</b>	There are no sound proofed spaces
	<b>Blackout</b>	TV Studio, warehouse, poetry, Galvanisers TV Studio.
	<b>Access details</b>	24 hour access. Flat load into TV Studio, Poetry Club and Galvanisers. Access to Warehouse and Photo Studio via lift: lift dimensions W 6.3 ft (1.93 m) x D 5.2 ft (1.56 m) x H 6.4 ft (1.96m) - lift aperture 3.2ft (1 m) x 6.4 ft (1.96 m)
	<b>Parking</b>	Free parking available on site
	<b>Additional features</b>	Possible use of Galvanisers Yard. 1,394 sq m (15,000 sq ft ) flat roof accessible by goods lift. Views over River Clyde and waterfront buildings. Dressing rooms with showers and a production office available. Traffic noise dependent on time of day.
Travel	<b>Closest major road</b>	Argyle Street
	<b>Closest major city</b>	Glasgow Edinburgh (50 mins travel time)
	<b>Closest airport</b>	Glasgow Airport
	<b>Closest accommodation</b>	Argyle Street, Finnieston and Glasgow City Centre





# TCU Studio & Office Facilities Glasgow



Contact	<b>Name of site</b>	TCU Studio and Office Facilities - Glasgow
	<b>Owner/company</b>	The Comedy Unit
	<b>Contact name</b>	Susan Haynes
	<b>Full address</b>	Unit D, Glasgow North Trading Estate, 24 Craigmont Street, Glasgow G20 9BT
	<b>Telephone</b>	+44 (0)141 305 6666
	<b>Email</b>	<a href="mailto:susan.haynes@comedyunit.co.uk">susan.haynes@comedyunit.co.uk</a>
	<b>Website</b>	<a href="http://www.comedyunit.co.uk">www.comedyunit.co.uk</a>
	<b>Previous production use</b>	<i>Rab C Nesbitt, Still Game, Gary: Tank Commander, Limmy's Show, Burnistoun and Only An Excuse?</i>
Features	<b>Dimensions of space</b>	Total 6996 sq ft (650 sq m): W 92 ft (28 m) x D 78 ft (24 m). Height 11 ft (3.4 m) (to scaffold)
	<b>Soundproofing</b>	Yes
	<b>Blackout</b>	Yes
	<b>Access details</b>	24-hour drive-in access
	<b>Parking</b>	Yes - parking on site. 40 cars
	<b>Additional features</b>	Sound deadening, 2 roller door entry, 3-phase power supply, makeup and costume space. Office space available, 2599 sq ft (241.5 sq m)
Travel	<b>Closest major road</b>	Maryhill Road (A81) with easy access to M8
	<b>Closest major city</b>	Glasgow
	<b>Closest airport</b>	Glasgow Airport
	<b>Closest accommodation</b>	<a href="#">Glasgow</a>



